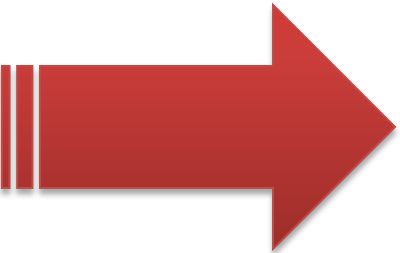


ASV (Anti-Spill Valve) Installation instructions

23 April 2014

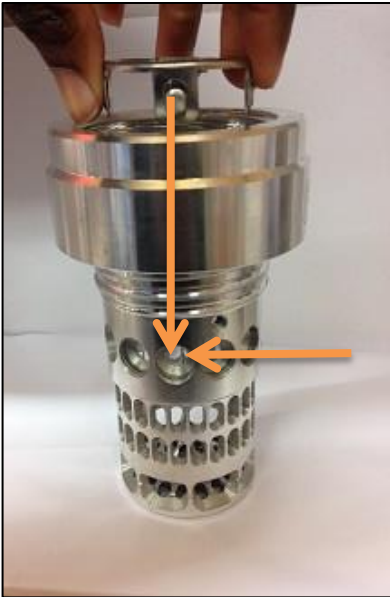


Insert the three
grubs screws into
holes

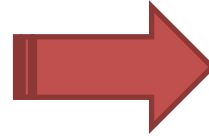
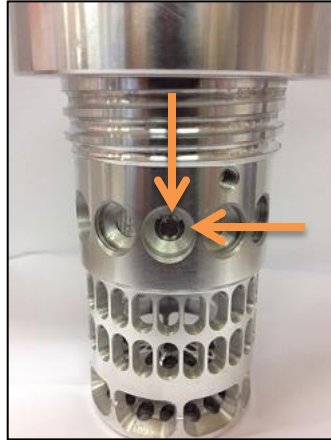
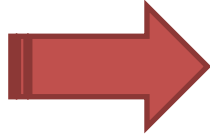


Line up one ASV tab with the centre of one of the largest holes

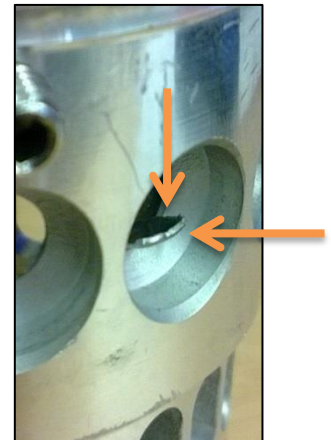
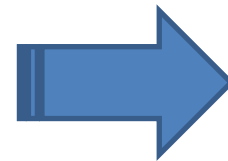
Push down the ASV until it is flush (level) with the internal step, below the grub screw holes



Push a screwdriver through one of the biggest holes towards the opposite ASV tabs



Hammer the tab horizontally outwards



Screw the grub screws back into the device until they are **flush** (**level**) with the outside of the device

All three grub screws should be inside the device above the ASV

